

m/v RIX EIRA



Delivered	Slovenia
Keel laid	1991
Class	RINA
Ice class	IB
Port of registry / Flag	RIGA / LATVIA
Call sign	YLSJ
IMO Nr	9057226

**Main dimensions:**

LOA	81,20
LPP	79,15
L (article 2(8))	
Beam	12,3
Depth moulded	6,70
Draft summer	5,20
Draft winter	5,10
Freeboard summer	<b>1,50</b>
Freeboard winter	<b>1,60</b>
Air draft	<b>18,2</b>

**Tonnage:**

DWT summer	3186
DWT winter	3094
GT	1999
NT	1159
FW allowance	<b>115</b>
TPC	<b>9,221</b>
Displacement	<b>4226,8</b>
Lightship	<b>1144</b>

**Capacities:**

Cargo holds	1
GRAIN	4228
BALE	<b>4228</b>
Bunkers MDO	<b>164</b>
Ballast water	<b>1377,7</b>
Fresh water	<b>42</b>

**Communication details:**

MMSI no:	<b>275551000</b>
Inmarsat	<b>NIL</b>
Telex	
Mobile	<b>+37129462455</b>
e-mail	<b>Rixeira shipnet.eu</b>

**Machinery:**

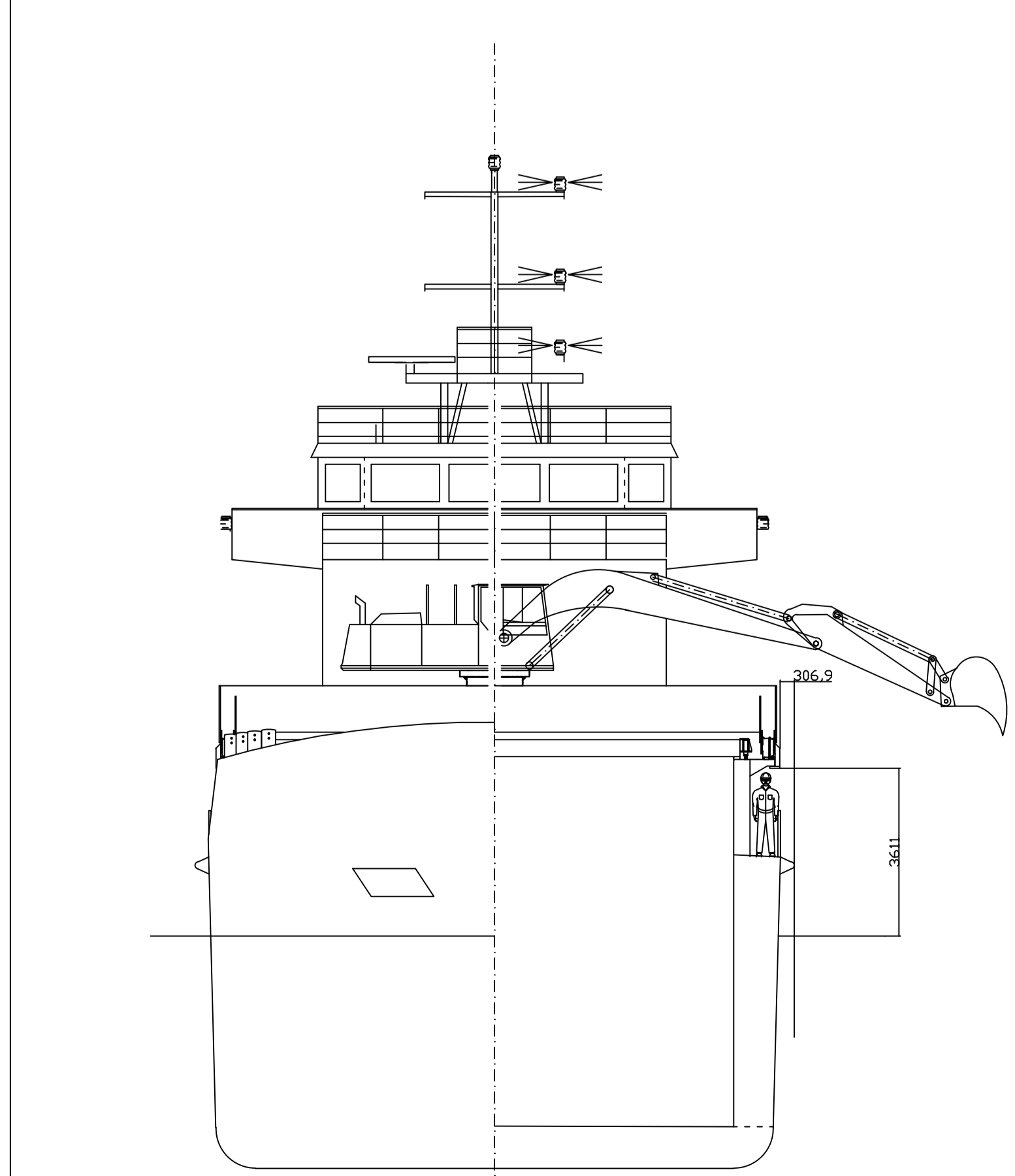
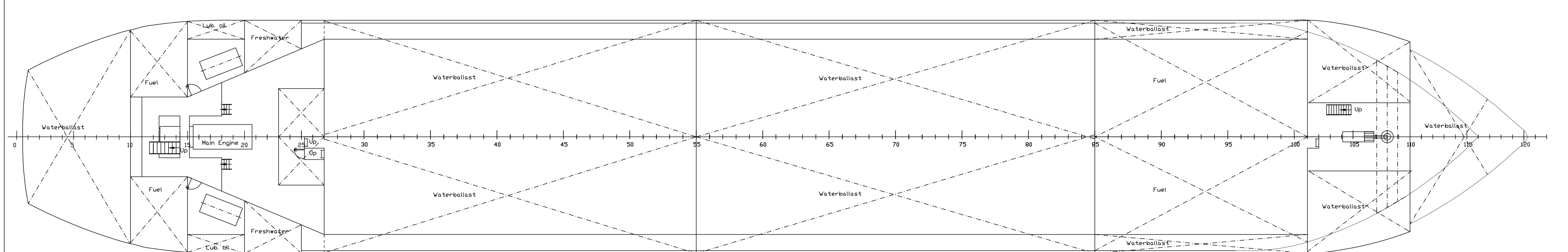
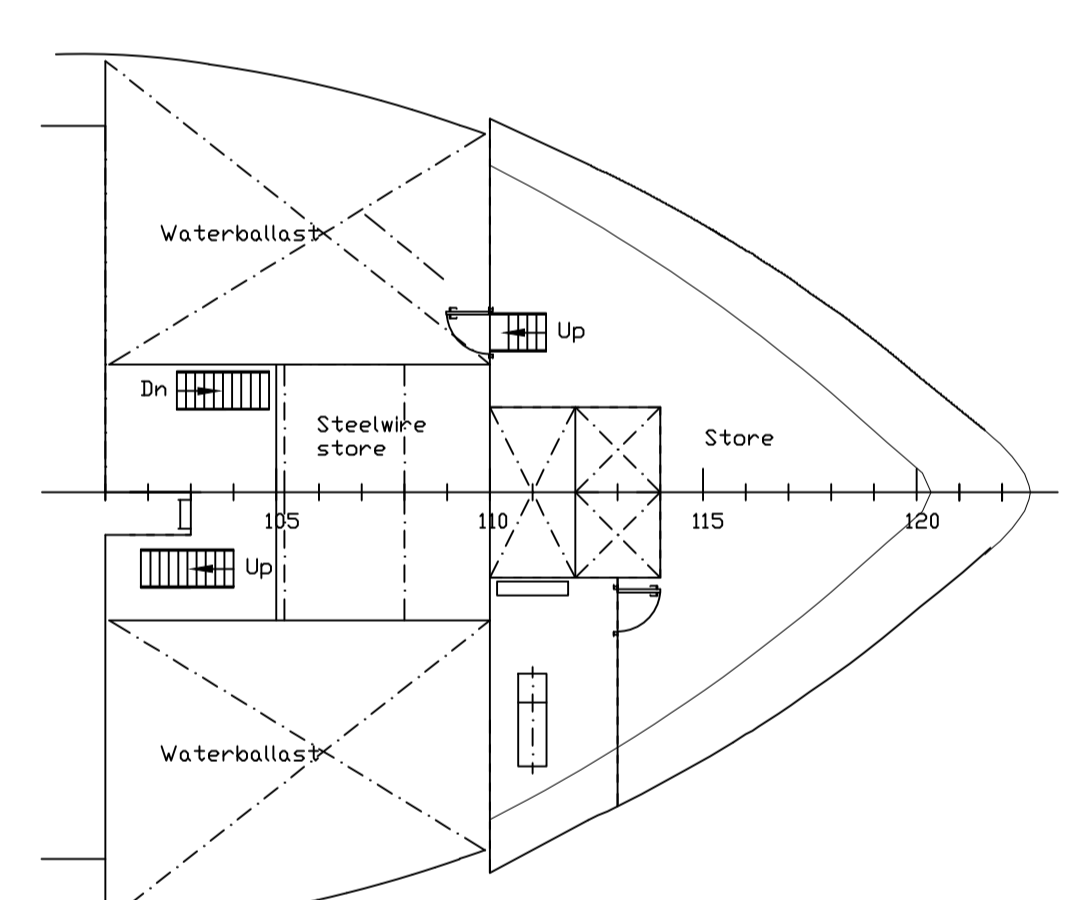
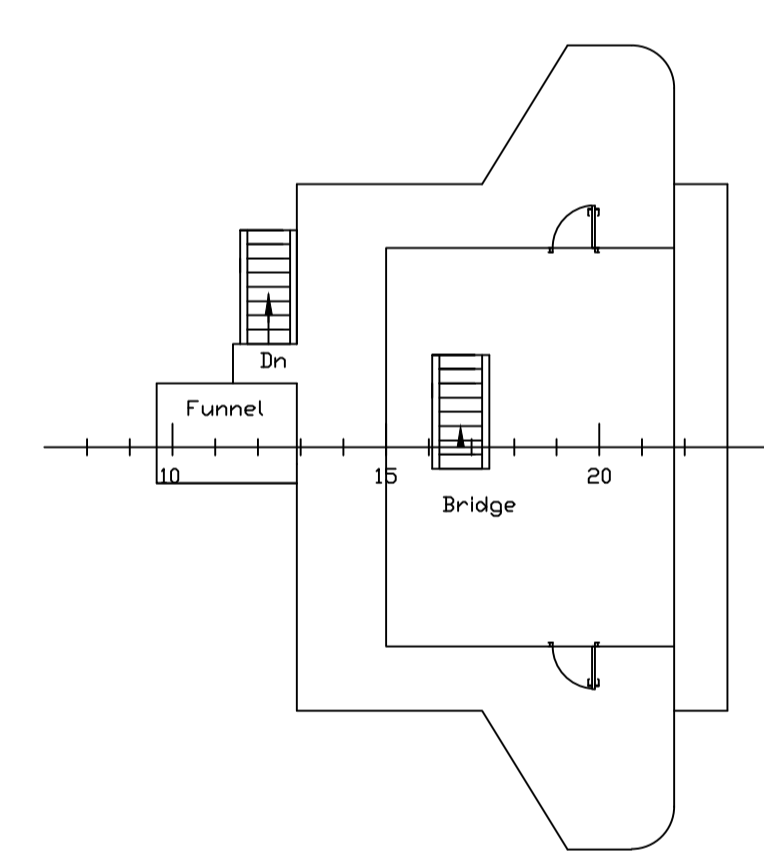
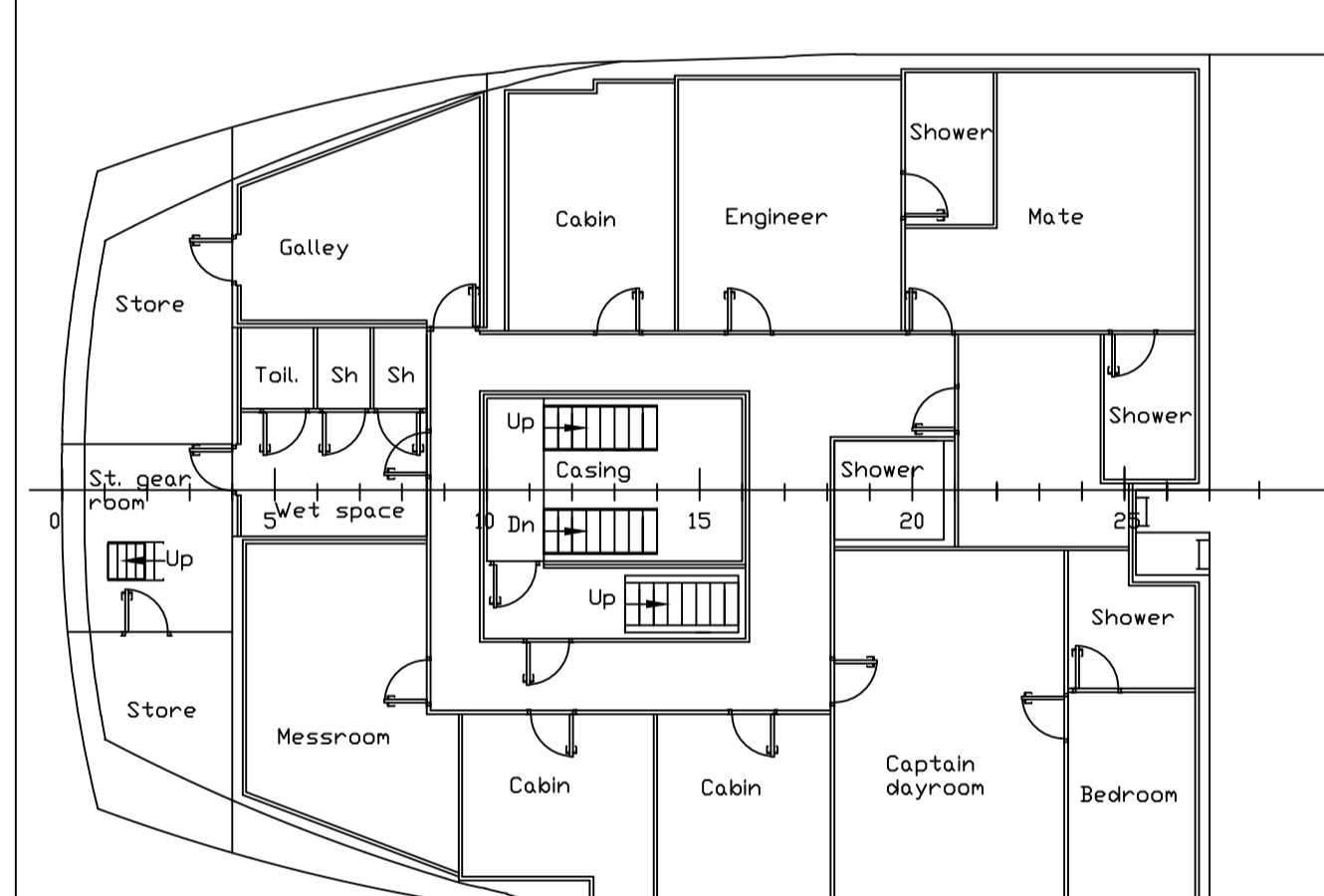
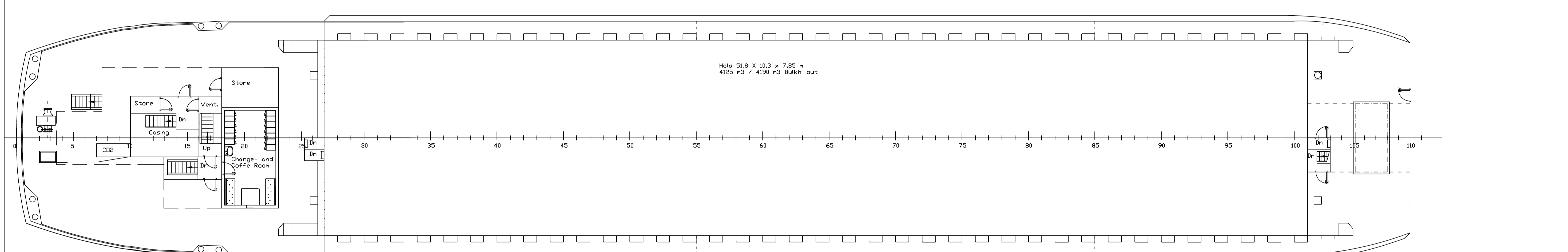
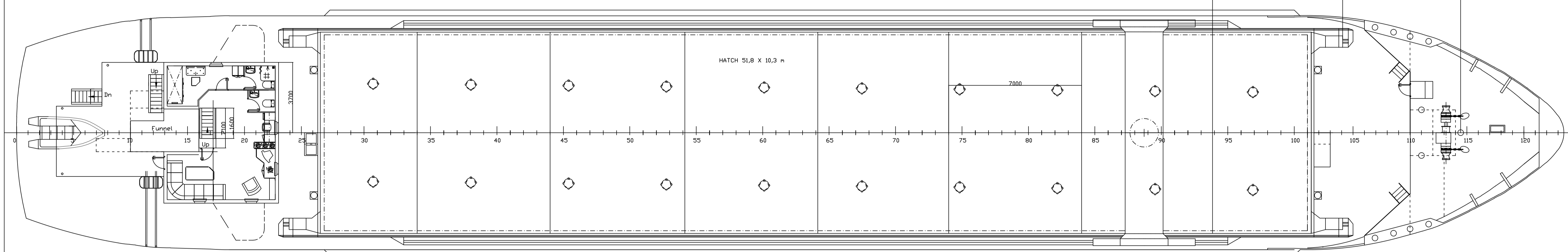
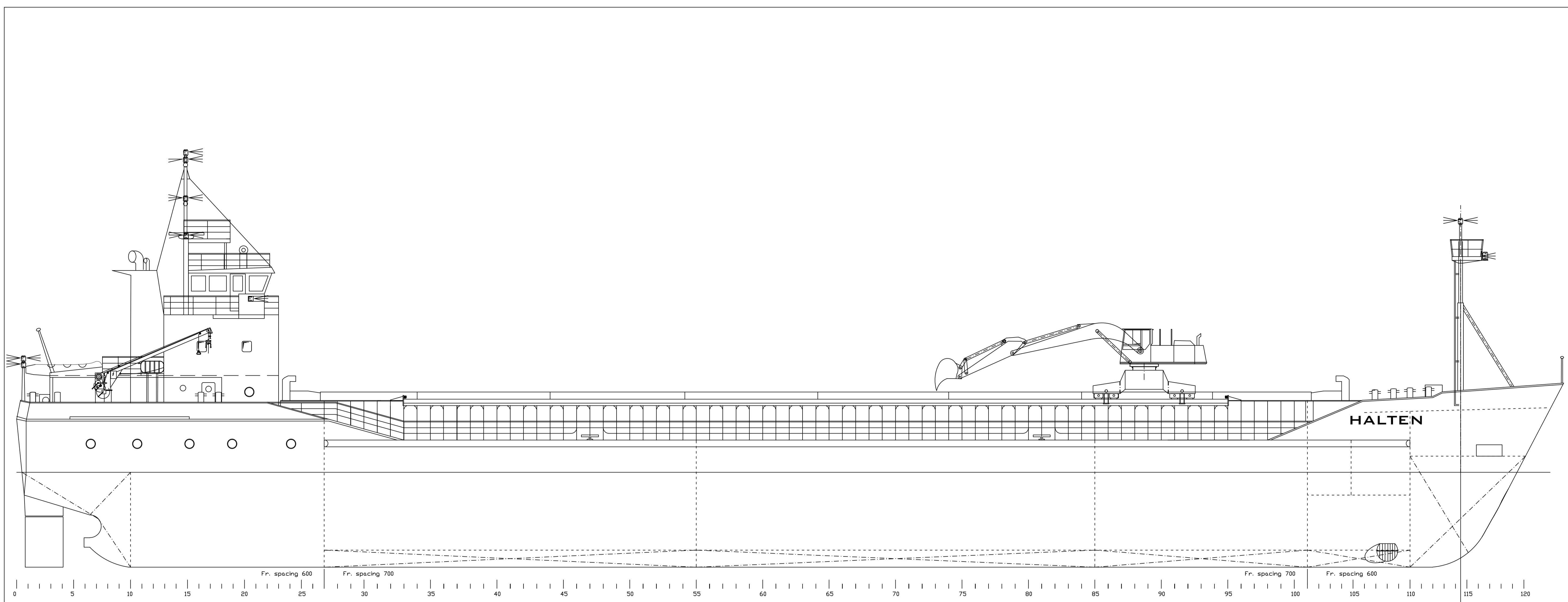
Main engine	1276 Kw Caterpillar
Auxiliaries	Cat 107kw,cat 63 kw
Propeller	Non slap 65 degree
Deck machinery	

**Holds capacities:**

Hold	4228
Grain	4228
Bale	4228
Total:	4228

**Holds dimensions:**

Length	51,80
Breadth	10,30
Height	7,95
Max load on TT	



**MAIN DIMENSIONS:**  
 LENGTH OVER ALL 81,20 m  
 LENGTH BETWEEN PP 77,00 m  
 BREADTH MOULDED 12,30 m  
 DEPTH MOULDED (TO SHELTER DECK) 6,70 m  
 DESIGN WATER LINE 5,28 m  
 ACCOMODATION 9 PERSONS  
 GROSS TONNAGE 1990

**CLASS:**  
 BUREAU VERITAS  
**FLAG:**  
 NORWEGIAN (NOR) - EUROPEAN TRADE

A General Arrangement Plan		Halten	10.04.05
REV	Description	Company	Date
	Drawn by: Ivar Christian Ulvan		
	General Arrangement Plan MV Halten	Dim.	Matr. Date 1 : 100
	Halten AS N-7266 Kverva Norway	Replacement for drawing	Replaced by Date 10.04.05
		Rev. nr.	Sheet no.
		A	
		Yard no.	Pkt. nr.