

m/v "TRANSMERIDIAN"



Delivered	15 Dec 2011
Keel laid	28 Sept 2010
Class	Lloyd's Register
Ice class	1 C
Port of registry / Flag	Monrovia / Liberia
Call sign	D5QF5
IMO Nr	9577757

Main dimensions:

LOA	179.88
LPP	176.75
L (article 2(8))	176.65
Beam	29.99
Depth moulded	14.70
Draft summer	10.32
Draft winter	10.105
Freeboard summer	4.38
Freeboard winter	4.595
Air draft	46.2

Tonnage:

DWT summer	35853
DWT winter	34760
GT	24210
NT	12118
FW allowance	0.227m
TPC	50.90
Displacement	46128
Lightship	10275

Capacities:

Cargo holds	5
GRAIN	46733
BALE	45654
Bunkers MDO/IFO	240 / 1150
Ballast water	12945
Fresh water	250

Communication details:

MMSI no:	636018551
Inmarsat	463724876/463724877
Sat phone	+37160008043
Mobile	+37125783279
e-mail	transmeridian@safesatnet.com

Machinery:

Main engine	YMD-MAN B&W 5S50 MC-C 7500KW 5 CYLINDERS
Auxiliaries	3XCME-MAN 5L23/30H 1XCSSC CCL J120E
Propeller	4 BLADES FIX PITCH BLADES SINGLE SCREW Dia 5650mm
Deck machinery	4xIHI-CM deck cranes SWL 30mt/25m

Holds capacities:1

Hold1	
Grain	7949.0
Bale	7819.0
Total:	

Holds dimensions:1

Length	27.5
Breadth	7.6/26
Height	17.2
Max load on TT	22.0

Holds capacities: 2

Hold2	
Grain	9790.0
Bale	9525.0
Total:	

Holds dimensions:2

Length	26.2
Breadth	26.6
Height	17.2
Max load on TT	22.0

Holds capacities: 3

Hold	
Grain	9783.0
Bale	9517.0
Total:	

Holds dimensions:3

Length	26.2
Breadth	26.6
Height	17.2
Max load on TT	22.0

Holds capacities: 4

Hold	
Grain	9783.0

Holds dimensions:4

Length	26.2
Breadth	26.6

Bale	9517.0
Total:	

Height	17.2
Max load on TT	22.0

Holds capacities: 5

Hold	
Grain	9428.0
Bale	9276.0
Total:	

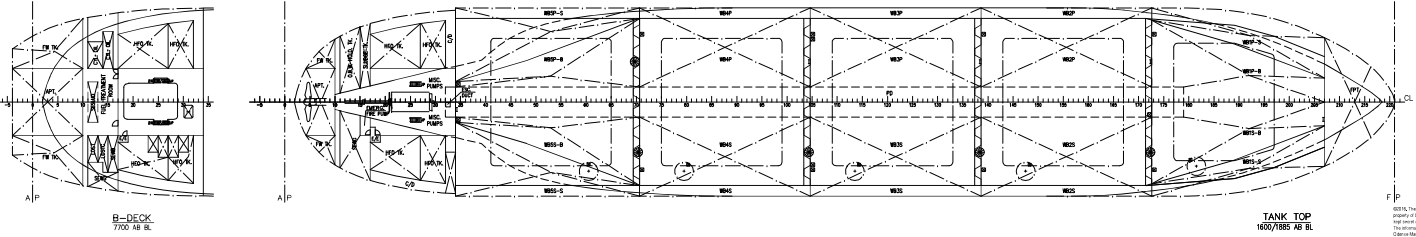
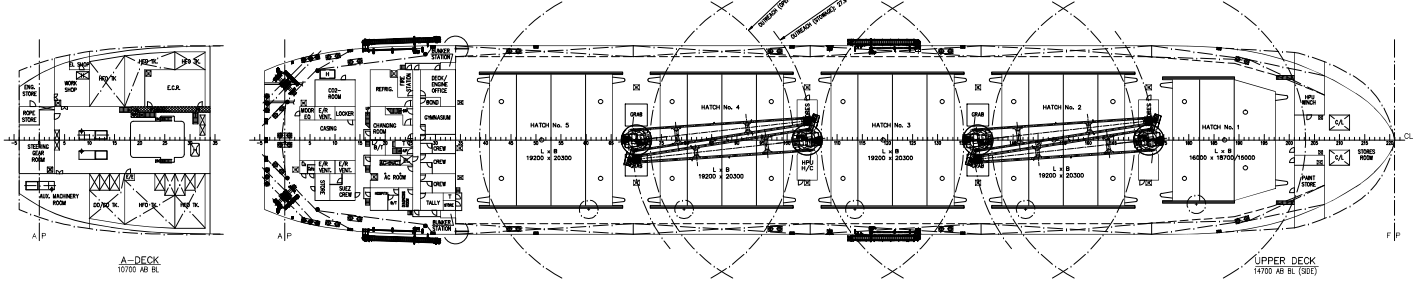
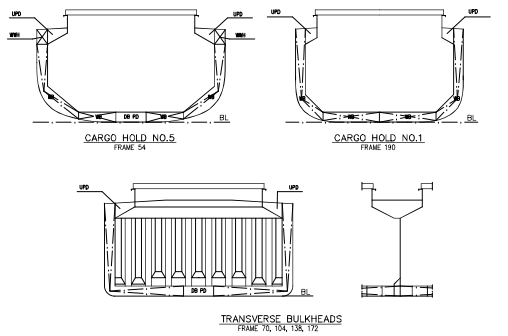
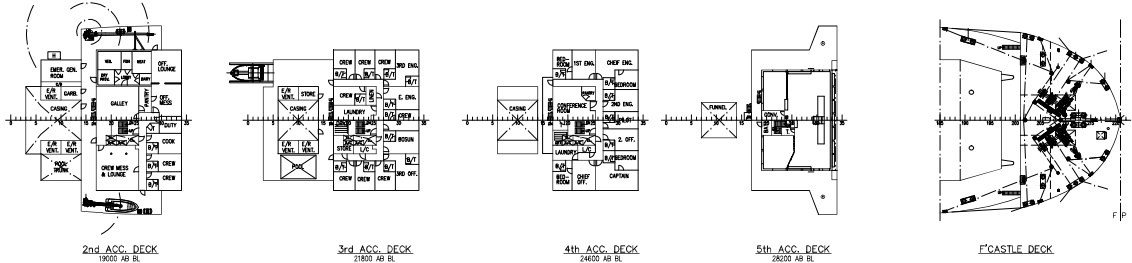
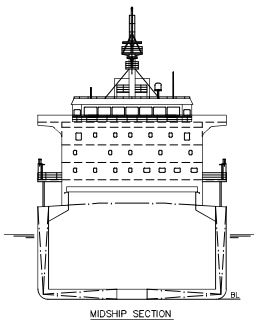
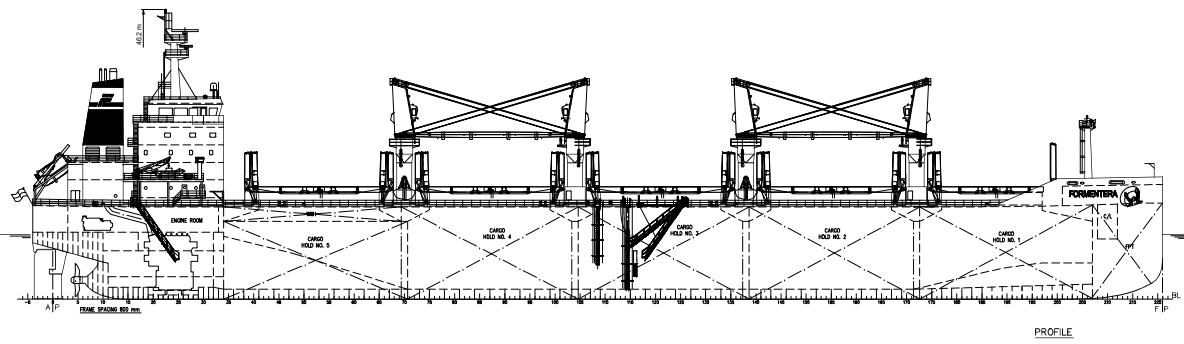
Holds dimensions:5

Length	28.3
Breadth	25.9/6.5
Height	17.2
Max load on TT	22.0

12 11 10 9 8 7 6 5 4 3 2 1

REVISION	DESCRIPTION	DATE	BY	QC
-	FIRST RELEASE	2016-09-02	JKR	JKR

WAREHOUSE TOP
 31000 mm AB EL.
 2nd ACC. DECK
 24000 mm AB EL.
 3rd ACC. DECK
 21800 mm AB EL.
 4th ACC. DECK
 24600 mm AB EL.
 5th ACC. DECK
 28200 mm AB EL.
 1st DECK
 14700 mm AB EL.
 2nd DECK
 10700 mm AB EL.
 3rd DECK
 7700 mm AB EL.
 4th DECK
 3700 mm AB EL.
 TANK TOP
 1600/1885 mm AB EL.



SEAHORSE 35 - M/V FORMENTERA

MAIN DIMENSIONS:

LENGTH OA MAX.	: 180.00 m
LENGTH PP APPROX.	: 178.75 m
BREADTH (MLD)	: 30.00 m
DEPTH TO UPPER DECK (MLD)	: 14.70 m
CUBIC CAPACITY (GRAIN)	: 46,733 m ³
CUBIC CAPACITY (BALE)	: 45,654 m ³
DWT (SCANTLING DRAFT)	: 35,853 mt
SCANTLING DRAUGHT	: 10.32 m
SERVICE SPEED (SCANTLING DRAUGHT)	: 14.0 kn
CORRESPONDING OUTPUT (15% SEA MARGIN)	: 6,000 kW

CLASS NOTATION:

DNV +1A1 BULK CARRIER ES(D), CSR,+DK, BC-A (CH 2 and 4 may be empty), GRAB(20), DG-B, HA(+), ESP, EO, TMON, BIS, FUEL (380cSt, 991kg/m³, -15°C), BWM-E(s,r), COAT-PSFC(B), IOE-1C



	Project: SEAHORSE 35	Project No.: M245
	FALCON MARITIME A/S	Scale: 1:400
	GENERAL ARRANGEMENT	Date: 2016-09-02
M/V FORMENTERA	Drw.: WHF	Date: 2016-08-31
	QC.: JKR	Date: 2016-08-31
	Drg. No.: 009-01	
Osense Maritime Technology A/S Copenhagen, DK Oslo, NO London, UK Singapore, SG Houston, TX, USA Mexico City, MX Lima, PE		Sheet 1 of 1 Rev.: -

12 11 10 9 8 7 6 5 4 3 2 1